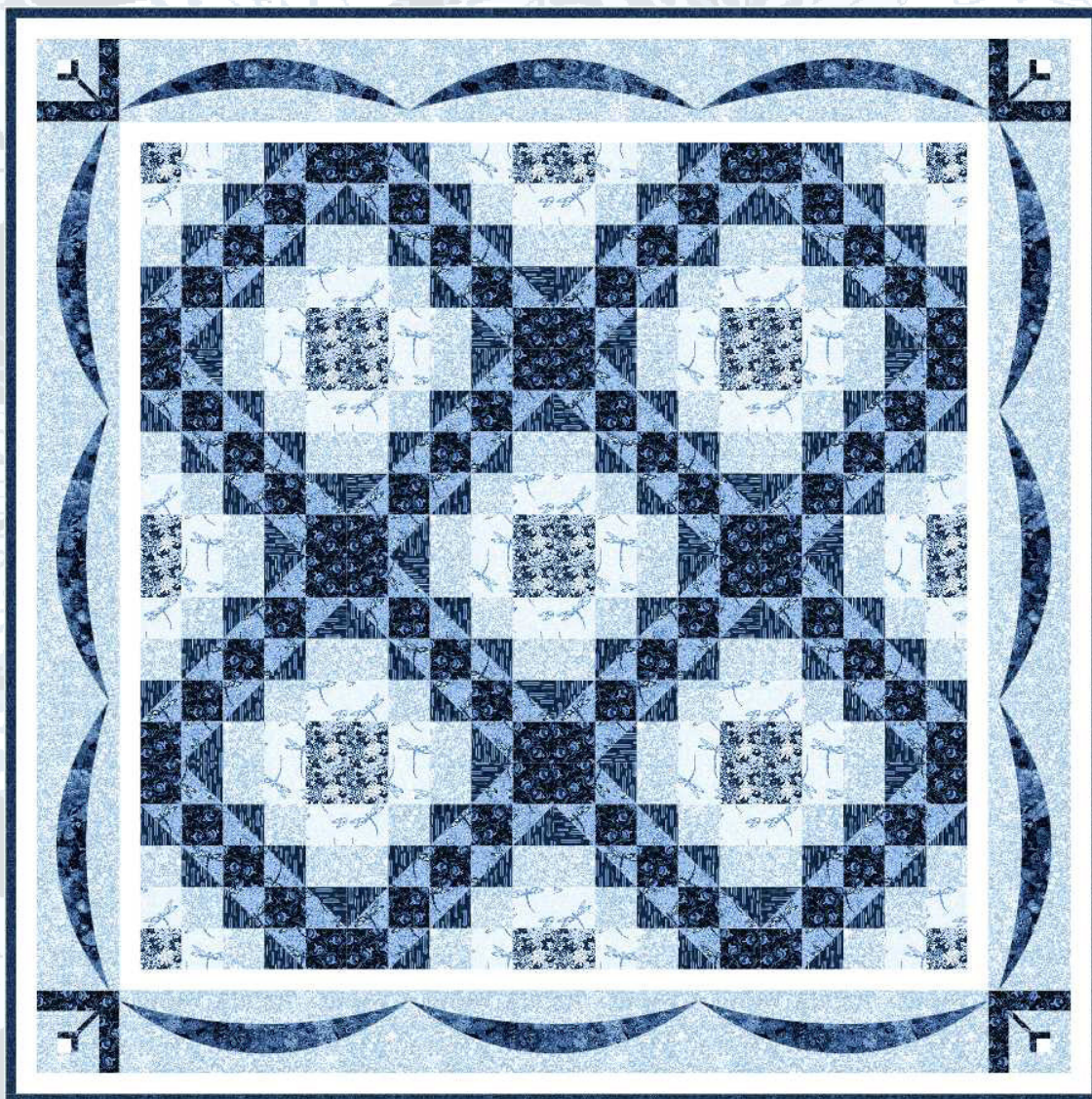




Once in a Blue Mood

Quilt 2
by Denise Russell



Quilt size: 52" x 52"

Skill Level: Advanced Beginner

Blank Quilting Corporation
49 West 37th Street ♦ New York, NY 10018
Tel: 800-294-9495 ♦ Fax: 212-679-4578
www.blankquilting.net

facebook

Free Project
NOT FOR RESALE

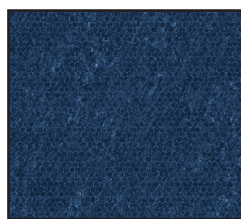
Once in a Blue Mood - Fabrics in the Collection



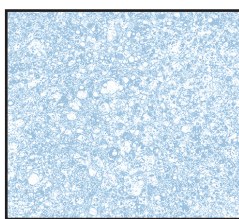
9732P - Panel - Med. Blue



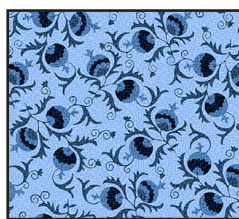
9733-70 Large Floral - Lt. Blue



9734-77 Dot Texture
Dk. Blue



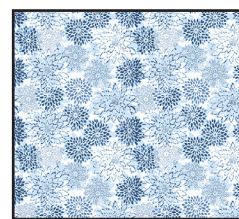
9735-70 Speckled
Marble - Lt. Blue



9736-75 Buds
Med. Blue



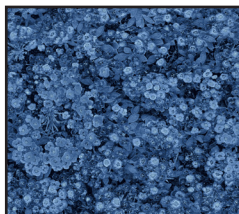
9736-77 Buds
Dk. Blue



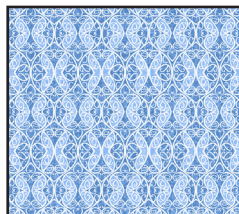
9737-70 Mums
Lt. Blue



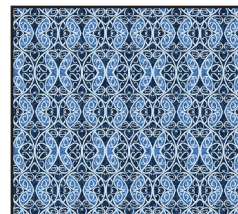
9737-77 Mums
Dk. Blue



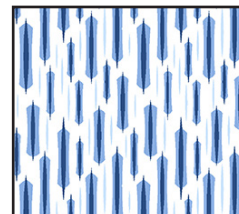
9738-77 Lacy Floral
Dk. Blue



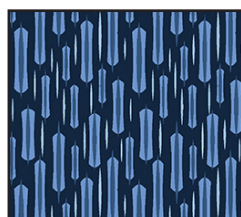
9739-75 Butterfly
Scroll - Med. Blue



9739-77 Butterfly
Scroll - Dk. Blue



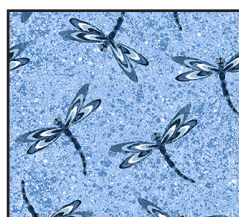
9740-70 Long Stitch
Lt. Blue



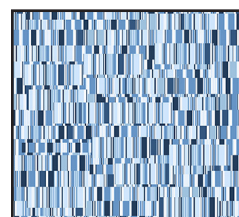
9740-77 Long Stitch
Dk. Blue



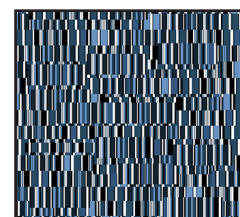
9741-70 Dragonfly
Lt. Blue



9741-75 Dragonfly
Med. Blue



9742-75 Mini
Rectangle Geo
Med. Blue



9742-77 Mini
Rectangle Geo
Dk. Blue



3955 Eclipse White

Materials

Yardages and cutting instructions are based on 42" of usable fabric width.

1/4 yard 9737-77 Mums-Dk. Blue
 5/8 yard 9741-70 Dragonfly-Lt. Blue
 5/8 yard 9740-77 Long Stitch-Dk. Blue
 5/8 yard 9736-77 Buds-Dk. Blue
 5/8 yard 9741-75 Dragonfly-Md. Blue
 5/8 yard 9738-77 Lacy Floral-Dk. Blue
 5/8 yard 9734-77 Dot Texture-Dk. Blue
 5/8 yard 3955 Eclipse-White
 1-1/4 yards 9735-70 Speckled Marble-Lt. Blue
 3-1/3 yards 9736-75 Buds-Med. Blue for backing
 60" x 60" piece of batting
 Plastic for templates
 Fusible Web

Cut Fabrics

Note: All strips are cut across the width of the fabric (WOF) from selvage to selvage unless otherwise noted. If cut across the length of the fabric (LOF), the LOF notation will be indicated.

From 9737-77 Mums-Dk. Blue:

*Cut two 2-1/2" x WOF strips.

From 9741-70 Dragonfly-Lt. Blue:

*Cut six 2-1/2" x WOF strips.

From 9740-77 Long Stitch-Dk. Blue:

*Cut five 2-7/8" x WOF strips. Sub-cut sixty-four 2-7/8" squares.

From 9736-77 Buds-Dk. Blue:

*Cut five 2-1/2" x WOF strips. Sub-cut eighty 2-1/2" squares.

*Cut one 4-1/2" x WOF strip. Sub-cut:

- Four 1-1/2" x 3-1/2" strips;
- Four 1-1/2" x 4-1/2" strips;
- Four 7/8" x 1-1/8" strips; and
- Four 7/8" x 1-1/2" strips.

*Cut four stems with template.

From 9741-75 Dragonfly-Md. Blue:

*Cut five 2-7/8" x WOF strips. Sub-cut sixty-four 2-7/8" squares.

From 9738-77 Lacy Floral-Dk. Blue:

*Cut twelve swags using template.

From 9734-77 Dot Texture-Dk. Blue:

*Cut six 2-1/2" x WOF strips for binding.

From 3955 Eclipse-White:

*Cut one 1-1/8" x WOF strip. Sub-cut four 1-1/8" squares.

*Cut eleven 1-1/2" x WOF strips – five for border 1 and six for border 3.

From 9735-70 Speckled Marble-Lt. Blue:

*Cut six 2-1/2" x WOF strips.

*Cut two 2-1/2" x WOF strips. Sub-cut thirty-two 2-1/2" squares.

*Cut one 3-1/2" x WOF strip. Sub-cut:

- Four 1-1/2" x 3-1/2" strips;
- Eight 1-1/2" x 2-1/2" strips; and
- Four 1-1/2" squares.

*Cut five 4-1/2" x WOF strips for border 2.

Assemble Blocks

Note: Measurements include 1/4" seam allowances. Sew with right sides together unless otherwise stated. If no direction is specified, press seams toward darker fabric.

1. Sew a 2-1/2" Dragonfly-Lt. Blue strip in between one 2-1/2" Mums-Dk. Blue strip and a 2-1/2" Speckled Marble-Lt. Blue strip to make a strip set. Press seams to center. Repeat to make two strip sets. Cut strip sets into thirty-two 2-1/2" sections (*figure 1*).

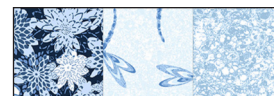


Figure 1 – Make 32.

2. Sew a 2-1/2" Speckled Marble-Lt. Blue strip to a 2-1/2" Dragonfly-Lt. Blue strip to make a strip set. Do not press open. Repeat to make another strip. Cut strip sets into thirty-two 2-1/2" sections. Press open with seam toward dark fabric (*figure 2*).

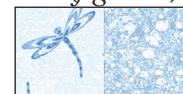


Figure 2 – Make 32.

3. Draw a diagonal line on the wrong side of the 2-7/8" Dragonfly-Md. Blue squares. With right sides together, layer the marked Dragonfly-Md. Blue squares atop the 2-7/8" Long Stitch-Dk. Blue squares. Stitch 1/4" on each side of the marked line, cut on the drawn line, press each unit open with seam toward dark fabric, and trim dog ears (*figure 3*). Make a total of 128 half-square triangles.

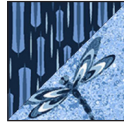


Figure 3 - Make 128.

4. Noticing fabric orientation, sew together one step 1 strip, one step 3 half-square triangle, and one 2-1/2" Buds-Dk. Blue square (*figure 4*). Press seams toward the dark square. Repeat to make thirty-two strips.

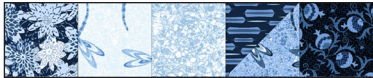


Figure 4 - Make 32.

5. In the same manner, sew together one step 2 strip, one step 3 half-square triangle, one 2-1/2" Buds-Dk. Blue square, and another step 3 half-square triangle (*figure 5*). Repeat to make 32 strips.

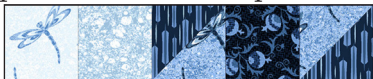


Figure 5 - Make 32.

6. Finally, sew together one 2-1/2" Speckled Marble-Lt. Blue square, one step 3 half-square triangle, one 2-1/2" Buds-Dk. Blue square, another step 3 half-square triangle, and another 2-1/2" Speckled Marble-Lt. Blue square (*figure 6*). Repeat to make sixteen strips.



Figure 6 - Make 16.

7. Assemble the blocks in rows using two step 4 strips, two step 5 strips, and one step 6 strip (*figure 7*). Press seams in opposite directions.

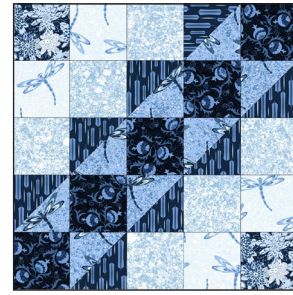


Figure 7

8. Sew a 7/8" x 1-1/8" strip to the left side of a 1-1/8" Eclipse White square. Press seam to dark fabric. Sew a 7/8" x 1-1/2" strip to the adjacent side, on the bottom of the Eclipse White square. Press seam to dark fabric again (*figure 8*). Repeat to make four patches.

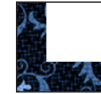


Figure 8 - Make 4.

9. Sew a 1-1/2" Speckled Marble-Lt. Blue square to the left of the step 8 patches (*figure 9*). Press seams to the square.

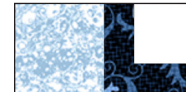


Figure 9

10. Sew a 1-1/2" x 2-1/2" Speckled Marble-Lt. Blue strip to the top of the step 9 patches (*figure 10*). Press seams to the last strip.

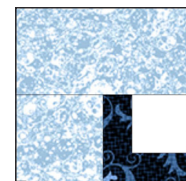


Figure 10

11. Sew another 1-1/2" x 2-1/2" Speckled Marble-Lt. Blue strip to the right side of the step 10 patches (*figure 11*). Press seams to the last strip.

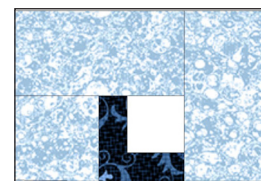


Figure 11

12. Sew a 1-1/2" x 3-1/2" Speckled Marble-Lt. Blue strip to the bottom of the step 11 patches (*figure 12*). Press seams to the last strip.

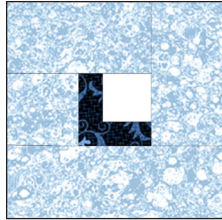


Figure 12

13. Sew a 1-1/2" x 3-1/2" Buds-Dk. Blue strip to the left side of the step 12 patches (*figure 13*). Press seams toward the dark strip.

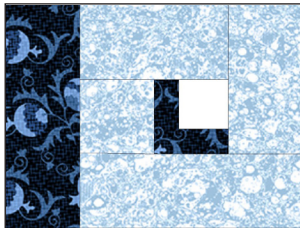


Figure 13

14. Sew a 1-1/2" x 4-1/2" Buds-Dk. Blue strip to the bottom of the step 13 patches (*figure 14*). Press seams toward the last strip.

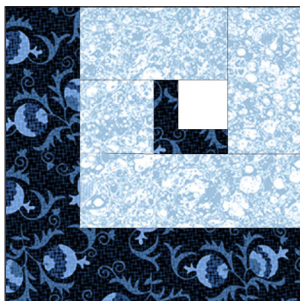


Figure 14 - Make 4.

15. Place the appliqué stem shape onto a light box or window pane. Layer the fusible web onto the shape and trace four times. Cut each shape 1/8" outside the outline and fuse to the wrong side of the Buds-Dk. Blue fabric. Cut on the outline and remove paper backing. Position stems on the step 14 blocks (see *figure 15* for placement) and fuse them according to manufacturer's instructions. Machine appliqué using matching thread and the blanket stitch.

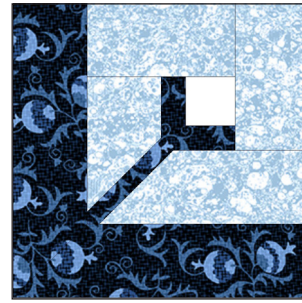


Figure 15

Assemble Quilt Top

16. Following the quilt photo for block orientation, lay out four rows of four blocks each. Sew the blocks together in each row, then sew the rows together in order, matching adjacent seams. Press seams in one direction.

17. For border 1, sew five 1-1/2" Eclipse White strips together end to end using diagonal seams. Measure the vertical length of the quilt top through the center and cut two border strips that length. Sew strips to the sides of the quilt top. Measure the width of the quilt top through its center. Cut two border strips that length and sew one to the top and one to the bottom. Press seams toward borders.

18. For border 2, sew five 4-1/2" Speckled Marble-Lt. Blue strips together end to end using diagonal seams. Measure the vertical length of the quilt top through the center and cut two border strips that length. Sew strips to the sides of the quilt top. For the top and bottom borders, cut two 4-1/2" x 42-1/2" border strips (If quilt center's width including border 1 [White] is different than 42-1/2", adjust these strips accordingly). Sew one 4-1/2" step 14 block to each end of the strips, and sew one strip to the top and one to the bottom. Press seams toward the borders.

19. Trace the swag shape on the plastic to make a template. Cut on the outline. Fold fusible web with smooth side out, place template onto it as shown on template page, and trace shape twelve times. Cut each swag 1/8" outside the outline. Unfold shapes and fuse them to the wrong side of the Lacy Floral-Dk. Blue fabric, cut on the outline, and remove paper backing.

20. Referring to the quilt photo and diagram, place three swags on each border, fuse them according to the manufacturer's instructions, and machine appliqué using matching thread and the blanket stitch.

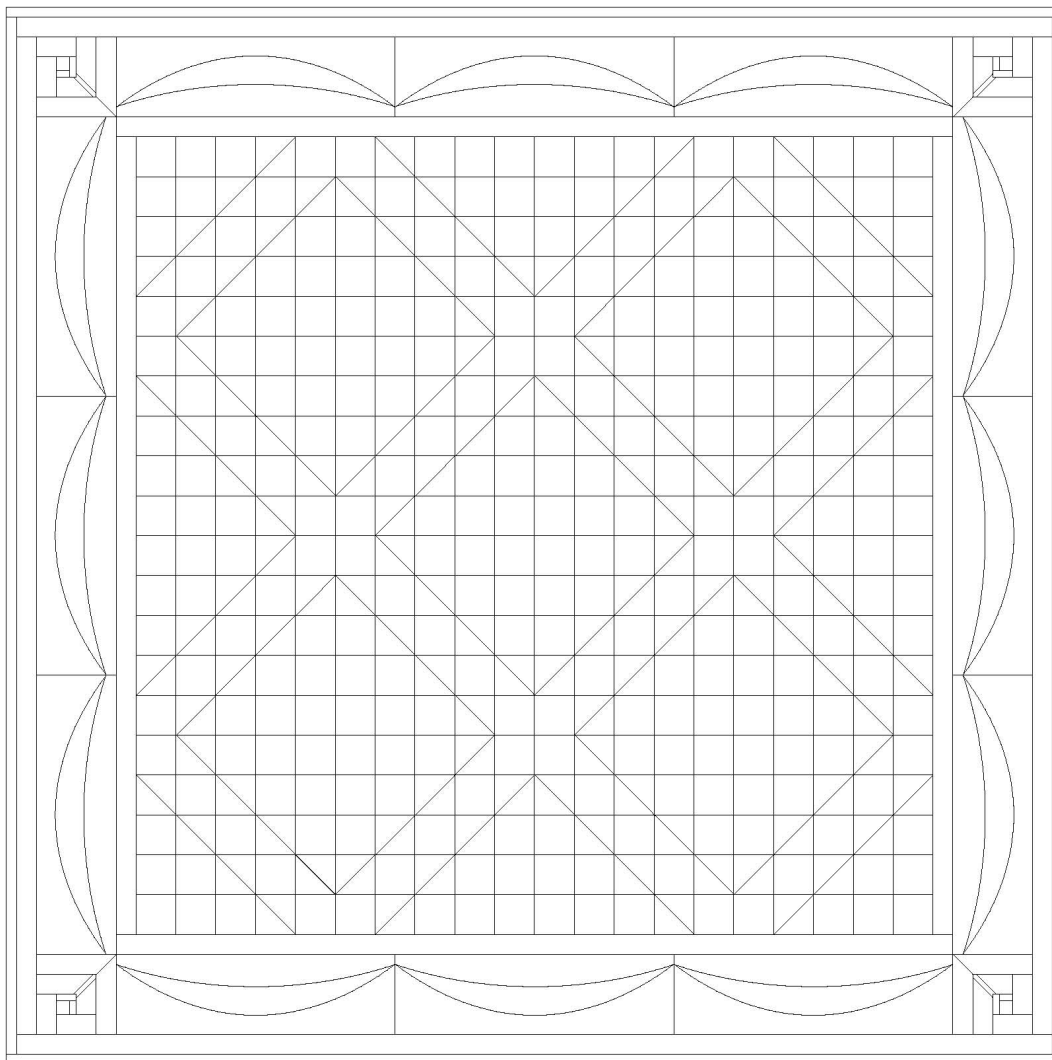
21. Repeat step 17 with the six 1-1/2" Eclipse White strips to make and add border 3.

Finishing

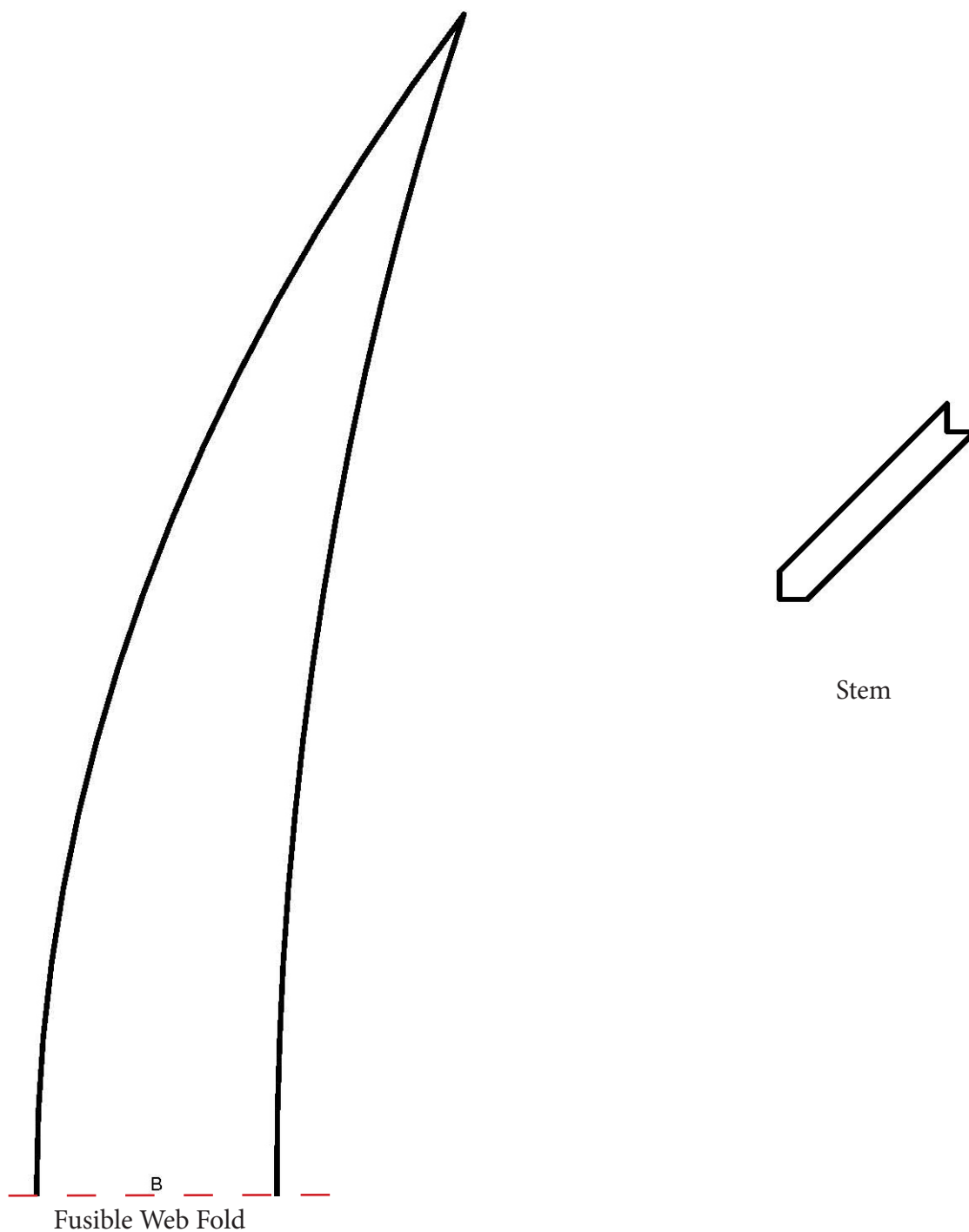
22. Create a quilt sandwich with the batting between the quilt top and the backing. Pin or baste layers

together, mark quilting design, and quilt by hand or machine. When quilting is complete, remove pins or basting, and trim batting and backing even with raw edges of the quilt top.

23. Join the six 2-1/2" Dot Texture-Dk. Blue binding strips together end to end using a diagonal seam to make one long strip. Press in half lengthwise. Sew binding to the edges of the quilt top, mitering corners, and overlapping ends. Fold binding to the back of the quilt and stitch it in place by hand to finish.



Quilt Diagram



©2019 Blank Quilting Corporation

Every effort has been made to ensure that all projects are error free. All the information is presented in good faith; however, no warranty can be given nor results guaranteed as we have no control over the execution of instructions. Therefore, we assume no responsibility for the use of this information or damages that may occur as a result. When errors are brought to our attention, we make every effort to correct and post a revision as soon as possible. Please make sure to check www.blankquilting.net for pattern updates prior to starting the project. We also recommend that you test the project prior to cutting for kits. Finally, all free projects are intended to remain free to you and are not for resale.